



EN NOLLNING

BAKOM



MASKEN

INTRODUCTIONGUIDE 2023
ENGLISH

DO YOU FEEL UNSAFE?

The most important thing about the introduction is to create a safe and welcoming environment where you get the best possible chance to get to know student life and your future course participants. The A-guild has **zero tolerance** towards all forms of discrimination, harassment and offensive special treatment.

If you feel unsafe, unfairly or badly treated, there are many ways to get help and support. **No problem or issue is too small to raise.** You can:

- **Talk to a phadder**
- **Talk with the Pepp**
- **Talk with the Phøs: overphos@asektionen.se**

- **Talk with JämliKA:**

JämliKA is a committee within the A guild that works with equal treatment in education and within the guild's operations. JämliKA is available to all students and you can turn to them if you have been treated badly or unfairly, or want to raise something else related to equal treatment, well-being or discrimination. The chairman of JämliKA is the guild's equality representative and has a duty of confidentiality.

jamlika@asektionen.se or an anonymous form at www.asektionen.se/kontakt/

- **Talk to the student social worker (SA):**

The student social worker has taken a study break and works full-time with students' equal treatment and well-being at the student union. SA functions as support for members who have been badly or unfairly treated during their studies and have a duty of confidentiality. Unlike jämliKA, SA does not have a direct connection to the A guild, but is available to all students at LTH.

sa@lth.se or an anonymous form at www.lth.se/klaga

- **Talk to the Chief of introduction:**

The Chief of introduction coordinates the introduction for all TLTH guilds and is the överphøset's contact person in the union. rolleamiral@lth.se

You choose whether and how your case is handled

Police

Tel. 112 at ongoing crime
Otherwise tel. 11414



The crime victim hotline

Tel. 116 006
Weekdays: 09-19
Weekends: 09-16


Women's aid

stod@kvinnojourenlund.se

CONTENT



Congratulations and welcome.....	4
Introduction 2023.....	6
Phøs.....	10
Pepp.....	12
Phaddergrups.....	14
Sexef.....	16
Missions.....	18
Board.....	20
Committees.....	26
LTH.....	28
Guilds.....	30
TLTH.....	32
Tips & Tricks.....	38
Vocabulary.....	40



CONGRATULATIONS & WELCOME



You are one of the lucky few who managed to get into one of these dream programs that make up the A-guild! To celebrate this and to welcome you and your new fellow students to Lund's faculty of Engineering and Lund, you will be greeted by a fantastic introduction during your first weeks at the university.

As an A-student, you are part of Sweden's second oldest university, Lund University, which was founded in 1666. You are also a member of the largest faculty at Lund University, LTH.

The guilds at LTH are within the student union and are run on a voluntary basis by the students on the courses that the guild covers. They function slightly differently depending on which educations they comprise and have been shaped into the structure they have today over several decades.

The A-guild today consists of the architecture program and the industrial design program. Our guild was the fifth to be founded in 1965, that means we have become 58 years old.

The main purpose of the guild is to make the members' study time as good as possible and act as study monitors. In addition, they exist to create a good community on and between the courses and also with the business world through various activities and events.



ARCHITECT & INDUSTRIAL DESIGN

As an architect and industrial designer, an exciting and broad, albeit demanding, industry awaits! The variety among the students is great, which makes the projects and the important collaborations extra interesting. The courses are characterized by both students and teachers being sincerely committed to their own and others' projects and visions.

The architecture program at LTH is both academic and artistic. The students are introduced to the profession with both theoretical and practical tasks. Model building and sketching are included, as well as courses in technology and digital tools. You usually work with larger projects, in parallel with longer and shorter courses.

The industrial design program is an artistic bachelor's program where students are introduced to and learn the process of product development, design and manufacturing. A lot of time is spent in the workshop, but also on this program theoretical courses are read in e.g. mechanics and materials science.


More detailed information about the programs and the various courses is available on Lund's faculty of Engineering's website:

www.arch.lth.se
www.industrialdesign.lth.se



INTRODUCTION

2023




We know how it feels to come alone to a new, strange city and start a new education. The introduction is for you to get to know new people as quickly and painlessly as possible and to be introduced to the fantastic years that you will spend here in Lund. There are many of us who will make sure that it will be a good introduction for you! We are the Phøs, the Pepp, the Phaddrar, the festivites committee and the student social worker.

The first five weeks that you will experience in Lund are thus largely planned by us and are called the introduction ("Nollning" in Swedish).

New students at LTH are called "Nollor", and not novices as in the rest of Lund. You are a Nolla right up until the Nollegasque, a large and formal party held at the end of the introduction. After a well-executed introduction and a fantastic sitting, you can rightfully call yourself a full-fledged "Etta"!

If you are worried and have heard about a introduction where the nollor are doused in copious amounts of alcohol and humiliated by older students, we can immediately put your mind at ease! The intro you will experience at LTH is a lovely few weeks of fun, mixed activities where we get to know each other together in pleasant and friendly ways. You will be well received by several Phaddrar who will do everything to make you feel at home in the study environment and in Lund as a city.

All intro activities are of course voluntary, with the exception of the daytime activities during reading week 0 (the first intro week, these are organized by the program management and study guidance). But the majority of nollor participate in everything precisely to find new friends, fellow students faster and more easily and to make themselves at home in their new study environment.



WHO WORKS WITH THE INTRODUCTION

THE PHØS

We who wrote this introguide and who put all our time and energy into welcoming you to Lund are the A-guild's Phøs. Phøset is a group of students from the guild who throughout the spring worked hard to make the 2023 intro an unforgettable experience!

THE PEPP

The pepp are Phøset's biggest aid during the intro. They are there for you if you have any questions or as the name suggests: to get you started and keep the mood extra good during the intro!

THE PHADDRAR

On the first day you will be assigned a phadder group. There are a total of eight. In each group there are nine to ten Phaddrar who take care of you during the intro and make sure that you get settled in Lund and at the A-guild. The Phadders are responsible for almost all communication regarding intro activities, but are also there so that you can get answers to your questions about the studies, the Campus and life in Lund. Your phadder group has its own theme which is a sub-theme to the A guild's intro theme "En Nollning Bakom Masken". In the phadder groups there will also be exchange students who, like you, are new to the school and Lund. Take the chance to start a conversation and make connections worldwide!

THE FESTIVITES COMMITTEE (SEXET)

Sexet has made it its life's mission to promote partying and joy in the A guild. It is sexet that organizes all the parties, dinners and bars that you will experience during your time at the A-guild. They also do a lot of extra job during the introduction, holding in extra bars and dinners!

STUDENT COUNSELOR

Camilla Fagerström Grubb is a study and career counselor for both Architecture and the Industrial Design program. She takes care of the planning for the activities that happen during the day in the first week. Together with her colleagues, she has also supported Phøset in its planning of the intro. If you have questions, you can reach her most easily via email or phone.

camilla.fagerstrom_grubb@lth.lu.se
046-222 30 90

AN INTRO FOR EVERYONE

In order for everyone to feel welcome during the intro, there are two golden rules that can be good to know:

- The introduction is completely voluntary for everyone involved.
- Openness and respect must characterize the introduction.

EN NOIR

BAKODA

MASS

LNING



SIKEN

OVERPHOS ENIGMA



The world speaks of a man known only as "Enigma," a name that dripps with enigmatic allure and whispered secrets. His face obscured by an ornate golden mask that conceals every trace of his identity. A masterpiece of artistry and glamour, it holds an aura of antiquity, as though it has witnessed the rise and fall of civilizations. Nobody knows what lay behind that mask.

The followers of Enigma, loyal zealots, watches with fervent adoration, their eyes a mix of awe and trepidation. They await their leader's words with bated breath, ready to carry out any command, no matter how perilous or sinister.

PHOS REXA LORDINA

A woman of exquisite beauty and a reputation that precedes her, Rexa Lordina extrudes an aura of both elegance and danger. Her enchanting presence commands attention, and men of all walks of life finds themselves willingly ensnared in her beguiling web.

It is said that Rexa possesses an uncanny ability to uncover the deepest desires and darkest secrets of those who cross her path. She wields this knowledge like a weapon, reducing men to mere pawns in her deadly game.

Some whispers that Rexa acquired supernatural powers, an otherworldly force that enables her to bend the will of her devoted followers to her every whim.



PHOS IAGO



Tall and distinguished, with piercing eyes that seem to delve into the very depths of one's soul. Like a puppeteer pulling invisible strings, Iago orchestrates the lives of those who falls under his influence, toying with their emotions and steering their actions towards his sinister agenda. His voice, like honey dripping from a poisoned chalice, can bend even the strongest-willed to his whims.

Rumors whispers of Iago's uncanny ability to understand the human psyche, to decipher its intricate workings with chilling precision. Iago views his followers as mere playthings in his game of psychological torture he constructs. No one is safe from his manipulative grasp.

PHOS

PHOS VERIA

Veria, a figure of both power and infamy. A woman synonymous with wealth and success. Veria has risen to become a prominent figure in the business world—a ruthless tycoon whose every step echoes in the pursuit of money. The wealthy elite, driven by their own insatiable desire for riches, are said to have pledged their loyalty to Veria, forming a tight-knit circle of disciples who eagerly carry out her every command.

The wealth she has amassed is a double-edged sword, for it is said that she valued money above human lives.



PHOS MORI

Mori, a man of rough demeanor and brawny physique, possesses an air of danger that permeated the very essence of his being. His broad shoulders and sinewy frame hints at a past filled with danger. With a gruff voice that sends tremors through the hearts of even the bravest souls. Grim rumors whisper through the local halls, tales of disappearances and unexplained deaths that leave the community gripped with terror. Mori himself would never hesitate to handle unsavory situations personally, unafraid to navigate the darkest depths of humanity to achieve his twisted goals.



PHOS REUS

Reus is a name whispered with fascination and dread. He ties connections equally among the most elite of art circles as the shadowy realms of the black market. He has earned a reputation as a high-ranking art broker with an insatiable thirst for rare treasures, who effortlessly deals in priceless masterpieces and clandestine transactions.

His influence reaches into every corner of the black market, artfully maneuvering the intricate web of illegal art acquisitions. Many seek his favor, desperate to gain entry into the coveted inner circles of the art world, where forbidden treasures exchange hands and fortunes are made or shattered.



▲ DRAGET PEPP



Let us present... a drAget PEPP! The people in the A-guild within the most go (drag)!

We reel in all of you nollor to the A-guild boat with a worm (mask) on the hook, hope you bite the lure(drAg)! We are here to pull(drA) the mood up so reel us in anytime you want! We are very excited to make this into your life's Nollning and hope that you will feel as the fish in the water in our company. Never hesitate to hook us for a dance or two! ;)

XOXO
Ye PEPPERS!!



EMILIA



Hello y'all!

My name is Øverpepp Emilia and I am studying masters in sustainable urban design. I'm from Poland and unfortunately don't speak Swedish, but don't hesitate to talk with me in English or Polish!

I am extremely excited about this years nolling and will make sure each one of you is having the best time possible!

You can always ask me about anything! I'm here for you!

Cheers, Øverpepp Emilia

TINTIN



ISAAC



JUNI



EDVARD



ALICE



Hallojj!

My name is Ida. I am from the neighboring city of Helsingborg and am studying in the second year of the architecture program in studio Y! Despite the fact that people (for inexplicable reasons) have started calling me Øvningpepp, I will do my very best to have a reasonable grasp of the situation and make your intro as smooth as possible! Whether you feel like chatting a little, having a thumb war, flying to Denmark (!!!) or breaking a world record, just hit me up! Still quite chatty :)) And if you're looking for me, you'll probably find me on the dance floor! See you in fog!!!

IDA



THE PHADE



breAk dAncers

Yo wazzup! We are the breAk dAncers. Doing the WORM and poplockin' the wampwamp our way to the middle of the dancefloor. Don't hate, just skate. Peace out!

Lila Pantrarna

On the way home from Lophtet, it is not uncommon to hear thistles and tassels among the bushes. Is it possibly an exhausted A-guild member resting up before the journey home? Maybe a runaway computer student who thinks it's still in VR? No no no. It's the master thieves Purple Panthers! But if you think it's money, gold and treasures we're after, you're wrong - the only thing we're going to steal is your hearts <3



Kents-A-Gents

Skillful and handsome, we tittle and tussle in bushes and around corners, silent as mice and with eyes like an eagle. With light steps we sneak up when you least expect it, behind hats, glasses and A-blazer we spy. We will find out what really happened, and go undercover to help Kent-A-gent. We are the coldest in LTH, for fear there is not an iota. But please don't mention Tuttifrutta. So watch out! We have now started to figure out... You never know where the Kents-A-gents might be lurking...



Baewatch

From a beach in LA to a park by the A-house,
From morning til night, always ready to save someone in the drunken chaos.
A-blazer, ouvve or red bathing suit,
Always responsible but ready to party in a minute.
The fittest on A, but always runs in slow-motion,
the lifeguards are never afraid to take action.
Your goggles are getting foggy and your getting washed away,
Dont worry A baewatcher is there to save your day.



ERGROUPTS

Springmaskarna

Scary. Mythical. Hard to get rid of. No one is faster than the pinworms! Smoothly we slip into every little nook and cranny and make our presence known throughout the A-guild. When you least expect it, we are there.



The Incapeables

The spandex costume and the mask, to hide your identity, is on. Your cape flutters behind you in the wind. As fast as a hawk you fly, no mission to large or small. Flying, Ølkubb and UtskAtt, you conquer them all!

You see a stranded nolla on the roof of the A building, it has to be saved! "Is that one of the incredibles?" you hear from below. "No wait, he has a cape! Even better! It's The Incapeables!"



Skäggbataljonen

The Beard Battalion sneaks through the dark alleys. The shadows dance along the walls as their bearded leader mysteriously disappeared. A sense of uncertainty fills the air. But suddenly a glimmer of hope appears. A pale streak of light breaking through the fog. What is appearing through the fog? What intricate plans are being forged in their shadowy realm? Only time can reveal the truth.



Powder PLAYers

Most dangerous on the slopes and fast off-piste, We know everyone wants our playlist.

Whether it's sunny or starting to snow, behind the helmet we are never dull.

For powder players it is always downhill, it depends on our sick power will.

If you see phaddrar with a ski, you know that powder players will soon slide in on the dance floor.



SEXET

We are the A guild's festivities committee and we are responsible for the festivities here at A! We arrange everything from A-Bars, dinners and grand Gasques. We run only vegetarian on the menu and of course there is always something good to drink.

We are a large group of fantastically fun people who are all very much looking forward to warmly welcoming you to the guild. With creativity and enthusiasm, we commit ourselves to creating the best events on the entire campus, with us you will therefore always find LTH's most beautiful hangout! Together with Phøset, we will do our very best to ensure that you get an absolutely fantastic introduction. Like our Facebook page, Sexmästeriet A-sektionen TLTH, for more info about us. Welcome to Lund and the A guild!

ALL LOVE /A-SEX



Songbook

For dinners, it's fun to have a songbook, partly to keep up with the singing, but also to receive greetings during the evening when the book is passed around the table. Songbooks are available for purchase at the beginning of the introduction.



DO LIKE A PHOS...

Get a blazer!

All guilds within the student union have their own guild clothing that represents the guild. Most guilds have overalls, but in the A guild we each have a black blazer that we print our guild's logo on!

So get a black blazer, if you haven't already. The quality matters less. On the jacket you will attach all the patches and other accessories you collect during your time as a student and afterwards it will become one of the most memorable items you own.

The A blazer should preferably be worn around the clock during the introduction if no other dress code is specified. Put your stamp on it and be proud of it! We also recommend that you get some comfortable trousers for the A blazer that you are not particularly fond of, it may happen that you get a little dirty at some events.

A tradition is that you exchange parts of your jacket for parts of the other guilds' overalls, or ouvve as they are often called, which are then sewn onto the jacket.

You look better at every party!



Patches

During the course of the year, but perhaps especially during the intro, you will have the opportunity to collect patches for your acquired jacket. Some guildpatches will be available for purchase during select guild events and others will be obtained by participating in various events.



MISSIONS

During the intro, you and your new coursemates will be assigned a mission to complete. These missions will be held between the guilds in several different categories. Participation is of course voluntary but highly recommended as you have a lot of fun together! In the categories where you are not competing yourself, you are welcome to come and cheer on the A-guild!



Balloon bust: There is talk of a balloon weapon that can soak Phøs/Føs/pHøs/Stab during the Nolleördag, but be careful not to accidentally hit A-phøs! Here, your innovative skills are put to the test.

Regatta: Build a ship to compete against the ships of the other guilds in the classic regatta battle that takes place every year in the clean waters of lake Lake.



Showdown: Perform a mime performance with only music and decor to help in keeping with the intro theme. An event that attracts large audiences and laughter.

Box car rally: Build a box car that will go around the fountain in Lundagård on Nolleördagen as quickly as possible.



Cheer: Come up with chants and maybe a dance and cheer on your classmates during their mission. On Nollefredagen, Cheer competes against the other guilds' cheerleading groups in a themed program.

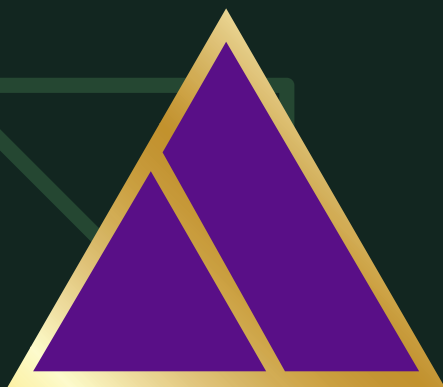
Øverphøs obstacle course: Create an obstacle that becomes one of several in an obstacle course. Your team will then face the Øverphøs of all guilds in an epic match.



WaTerloo: Build a fort and keep it dry in a battlefield of water balloons while soaking others.

Flying: Build a craft that will fly all the way from Helsingborg to Helsingør to Helsingør to Helsingborg...





△ GUILD

“WE SHINE AS BRIGHT AS THE SUN”

A-SQUAD

The A guild has an A-Squad also called A-Laget or A-Team. This includes the guild's mascot, spirit animal and patron saint.



PATRON SAINT
ROLF-KRISTINA



MASCOT
SKALMAN



SPIRIT ANIMAL
UNICORN

THE BOARD

The board has overall responsibility for the guilds' operations and is the guild's highest executive body, which ensures that the decisions made at board and guild meetings are implemented.

The Presidium is the group that leads this work with the guild and consists of our president, vice-president, secretary and treasurer.

In the big questions, it is the guild's members who decide. This is done through the guild meetings held at least once per semester. The board meets at least once a week, usually over lunch. All guild members are welcome to attend but do not have voting rights at these meetings, just let us know in advance if you plan to come.

The board includes all committee heads and the presidium. The committees have different orientations and are responsible for different types of events (see page 26). The committees consist of a chairman and several officials. Officials are always needed and it's a fun way to meet new people. So if you think any committee seems exciting, just contact the chairman of that committee.

The guild is for the members and there should be something for everyone. The board is always interested in suggestions, ideas and opinions and always wants more creative and committed officials.

Ida Thorsson
President
ID 2



Tjenixen!

Ida here and I attend ID2 and sits as president of the A guild. Big congratulations and a very warm welcome! In the future, there will be a lot of crazy new things and of course lots of fun! I'm always everywhere and nowhere so just grab me if you have any questions, need help or want to hear a funny story. What I do as president is incredibly mixed! In addition to organizing board meetings, I keep a watchful eye on the guild. Which of course means I find out all the yummy secrets and get washed over by fame ;) See you!!

Tjolahopp!

My name is Hilda and I am the guild's vice president and also a student in Ark3. As deputy, I have the guild's best post: I get to hang out with Ida and help her make decisions, but avoid her heavy responsibilities. Win! In addition, I get to take a little extra care of our alumni and current officials. I sneak around when and where you least expect it in and around the A house, and if you have any questions about the intro, school or housewife tips, I'll be happy to answer. If you can find me...

Hilda Johansson
Vice President
Ark 3



Oscar Landgren
Treasurer
Ark 2



Tjo!

After it was revealed that I had an unusually long Excel sheet on my personal budget and am the child of two economists, I, Oscar Landgren from Singapore, became a treasurer even though I initially despised the role. However, I quickly geeked out on the economy and felt a sense of nirvana when the numbers matched perfectly. In addition to that, I'm active in IntA and Sexet when I'm not browsing receipts. The introduction can be confusing but also damn fun. I felt really welcome as a new student all the way from Singan. Have a great time and see you!

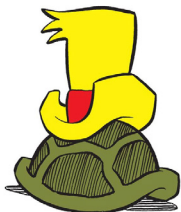
Hellu!

After I have already sat on the board in 2022, I was drawn in again but this time as treasurer no.2. Oscar is the youngest on the board (perhaps even on the guild??) and the board felt it was needed someone old and stocky like myself who has an extra good grasp of the guild. My name is Lisa and I have just started MID 1. My role then is to keep an eye on Oscar ;) No, but we share the job as treasurer and I mainly take the part within the guild and help with the bookkeeping when needed.

Lisa Christiansson
Treasurer
MID 1



Secretary
Post vacant

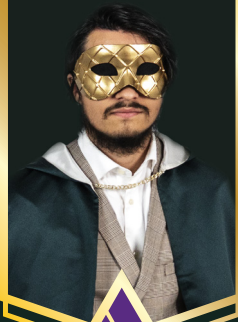


This skalman has gone into hibernation for the season. Maybe A-guild's next secretary are among you.

Hejsan Nollan!

My name is Enigma and I am your Øverphøs this year. With great joy I welcome you to the A guild and Lund! Together with my phøs, I have spent the last year planing the A guild's Introduction for 2023, because I think you should have a fantastic start in your student life! I hope you make many new friends and lifelong memories. Once again, congratulations and a warm welcome!

Enigma
Øverphøs



Axel Kjellberg
Head of NärU
Ark 2



Halloj!

My name is Axel and I am the head of the Business Committee at A! NärU exists to give us students a chance to meet and talk to those who survived their studies and are working with something fun. One of our main tasks is to organize the annual job fair Arkipelago but also various lunchtime lectures, workshops, AW, study visits....and a little more! We want you who think it's fun to organize events, make contacts with working life and get as broad a view of the profession as possible. At the same time as we have real fun along the way. Do you have questions? Get in touch and we in the NärU family hope to see you in the autumn!

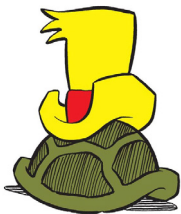
Tjena!

My name is Bea, I'm 22 years old and I'm from Sweden's only city, Malmö!!! When I'm not rowing in my favorite committee Sexmästeriet, I'm reading ID year 2. As a Sexmaster, I work with all my other little masters at all the parties, sittnings, bars and after parties. Everything that has to do with food and alcohol! I'm always there and make sure everything is as fun as it should be, come to me if you have the slightest question or request and we'll make sure to solve it! :)

Bea Olsson
Head of Sexet
ID 2



Head of InfU
Post vacant



Skalman loves the guildpaper A4 and merch from the A-guild. But where can he get those without a head of InfU?

Tja!

My name is Thea Kaplan and in the fall I will start my second year on the Industrial Design program here at IKDC. Within the A guild, I am also chairman of the Activities Committee, AktU! In my opinion, we are by far the most fun and fast-paced committee because we are responsible for the events and parties! We organize everything from sports tournaments to singing battles, beer miles, clothes swapping days and bike parties! I'm the one who plans and holds our cozy and fun lunch meetings, but also sits together with the other sweet people on the board! See you! xoxo

Thea Kaplan
Head of AktU
ID 2



Elsa Ericsson
Head of CeremU
Ark 2



Hejsan!

My name is Elsa and I am in my second year of the architecture program. In addition to that, I am chairman of the Ceremonies Committee, which decides on the guild's traditions. For example, we are the ones who design medals and hold chapters of the order. We are also responsible for the songbook by choosing which songs will be in it, designing it, getting it printed and selling it. Most of the A-guild's regular patches are also designed by us.

Hej!

My name is Fredrika and I am the chairperson of the Student council at the Architecture Program - SRA. Our main mission is education monitoring with the goal of improving education and ensuring that students' opinions are heard. We work to create a safe and pleasant study time. You can contact us with any problems and questions regarding the training. Either we can help you directly or we can refer you to the right person. As a member of the committees, you gain insight into how the education develops and the opportunity to influence your and others' study time. You also get many valuable meetings with both students and employees at the school. Coffee included :)

Fredrika Kjällqvist
Head of SRA
Ark 2



Modesty Bladh
Head of SRID
ID 2



Tja!

Our work is to ensure that the industrial design student's voices, ideas, concerns and more are heard. We have student representatives within the many different organizations and committees that influence the industrial design program at Lund University. We also help the workshops and studios at IKDC to function well and to introduce new ideas and improvements. No concern or idea is too small or too big to bring to the table. Everyone is welcome to our meeting once a week. We lead as a team, and that includes you. We welcome you to IKDC.

Hallå!

My name is Leo, and this year I am the equality representative for Jämlika. The equality representative exists to support students in architecture and industrial design and is someone you can turn to for questions or problems regarding equal treatment, well-being or, for example, various student resources. It is also Jämlika's responsibility to review the education and the A guild's operations from an equal treatment perspective. We have relatively free rein when it comes to what we want to work on, but we can, for example, organize workshops, lectures or other events to pursue these issues. If you want to know more or have any questions, you can contact me. See you!

Leo Kronholm
Equality Representative
Ark 2



Camille Lambreth
Head of IntA
Ark 5



Hej!

My name is Camille, I am the guild's worldmaster and head of the International committee. IntA is a committee that is open to everyone and anyone from everywhere and anywhere. We hold several events during the year that vary from fika to games, as well as our annual Christmas feast. We are free and open to any new ideas and events that have all kinds of themes. Our goal is that Swedish and international people from the guild get to meet and get to know each other.

We are warm and welcoming, hope you can join in on the fun!

Edwin Svensson
House Elf
ID 3



Tja!

My name is Edwin and I am an ID student. As the house elf, I am a bit of the guild's ex-centric caretaker. No one really knows what I'm doing or why. The most important thing to do is to each annual meeting raise the question of the house elf's status on the board and the possible financial contributions that the elf should thereby be entitled to.

THE COMMITTEES



Activities committee (AktU)

Responsible for the guild's activities & events. You can e.g. participate in the musical/spex "Sångarstriden" or why not the Tandem Relay between Gothenburg & Lund, all thanks to AktU. Or maybe you have a good idea for an event - don't hesitate to get in touch!



Ceremoni committee (CeremU)

Informs about dress codes and etiquette for sittningar. The committee's Song Master brings out the best from the songbook. Also arranges the awarding of medals and is in charge of the design of guild badges/accessories and their sale. Keen to know more about traditions at A? Then you've come to the right place!



Information committee (InfU)

In charge of the guild's graphic design and communication. Keep your ear to the ground with the well-loved guild magazine A4, which is happy to welcome more writers. InfU is also responsible for all the stylish posters for events. Is this something you're keen on, or do you think maybe the A guild should get merch? Join InfU!



Equal Opportunities committee (JämlikA)

Working for an equal guild through equal treatment and discrimination issues. You can turn to Jämlika's chairman with problems and questions regarding these issues. The committee holds lectures/seminars in the subject and provides support for the students in the A-guild.



Business committee (NärU)

Working to establish important contacts between business and students at A so that you, as a student at an early stage of the education, will have the opportunity to expand the contact network and gain an insight into working life. NärU organizes, among other things, Archipelago, Alumni talks, lunchtime lectures and workshops, to name a few.

The Phøs

The Phøs is responsible for planning and implementing the A guild's introduction, which takes place during the first five weeks for you as a new student in the guild. They are the six mysterious figures who put their heart and soul into giving you the best possible welcome!



Festivities committee (Sexet)

If there is a barnight or a sitting, it is most likely Sexmästeriet that will host the event. The sexet's main task is to keep the mood and the community up here at A, and for that you need people who have an interest in cooking, serving or bartending. Do you feel enticed? Contact sexet to join!



Student council in Architecture (SRA)

SRA is the students' voice towards the program management at the Architecture Education. The goal is for all students to feel as good as possible and for the education to be the best it can be. SRA works development work with teachers and school management and organizes information conferences to improve your time at school.



Student council in Industrial Design (SRID)

SRID is the students' voice towards the program management at the Industrial Design Education. It is important that the educational quality of the program is kept high and the atmosphere in the drawing rooms is good. If something is missing or can be added to the training, SRID presents it to the program management. Join us and give your opinion!



International committee (IntA)

The guild's international committee, which arranges events for international students such as dinners, baking, Christmas parties, etc. The committee always needs more committed students who want to make the exchange students' time at LTH unforgettable. The committee also informs its own students about how to go about going on exchange.



LTH



In the northern part of Lund, just a few minutes by bike from the city center, is LTH. There you will study together with approx. 7000 other students, so it is always crowded with people.

In the middle of LTH is the Kårhuset, where the welcome address for the fall semester is held on the morning of your first day. You will then be shown over to the A-house, the Architects' main hangout, and IKDC (Ingvar Kamprad Design Centre), where you who study Industrial Design will spend most of your education. The two houses are connected via a glass corridor and are therefore often seen as two parts of one and the same building.

THE STUDENT UNION



As a student at Lund's faculty of Engineering, the engineering faculty at Lund University, you can become a member of the student union, TLTH. It is Lund's largest student union and conducts study monitoring activities, business contact and leisure activities such as sports activities, cafes, dinners, balls and introduction. The union conducts a lot of activities centrally, i.e. for the whole of LTH, but the absolute largest part of the activities is conducted in the various guilds. TLTH is divided into eleven guilds, with the A guild being the fifth to be formed.

It is voluntary to become a member of the student union and the one-off fee is well worth the money. Go to www.tlth.se and click on to student and become a member.

The Mecenat card is what will become your union identification, your so-called union leg. It may take a few days for the card to arrive, but in the meantime you can use the website medcheck.tlth.se or the mecenat card's own app to prove your membership. You must be a member of the student union to participate in the introduction and all upcoming union events. However, you may participate in the daily activities that take place during week 0 (first intro week) even if you choose not to become a member, as they are organized by the program management and study/career guidance.



LUND A TOWN FOR STUDENTS



Lund is a city strongly marked by the university. A real student town. Of Lund's approximately 100,000 inhabitants, no less than 45,000 are students and it shows! In the city park, at outdoor cafes, biking on the way to a lecture, in the queues to the nations, yes, everywhere is teeming with enthusiastic and happy students. Want to know more about what's happening in the city? Go to www.studentlund.se!

NATIONS

An important ingredient in what makes Lund such a wonderful city to study in is the nations. Joining a nation is optional, but it's something you definitely don't want to miss! The nations are run by students from lots of different educations and they organize all sorts of activities alongside their studies. Some examples of activities are: restaurant operations, sports activities, lunches, cultural events and nightclubs.

There are 13 nations in Lund, all of which have slightly different orientations. Please read about them before deciding which one to join. Regardless of which nation you join, you are welcome to participate in most activities of the other nations, and it is always possible to switch if you discover something you previously missed. The nations were originally associations for students from the same home regions and are therefore named after landscapes, towns or regions. Today, however, you can join any nation you want regardless of where you come from.

When you have chosen your nation, you register as a Novice at their service desks. They usually have special opening hours for novices, you can see this on the nation's website.

A couple of weeks after you enroll at the nation and pay your semester bill, you will then receive a student card. This, together with valid identification, allows you to take advantage of the nations' various activities. Before you get your nation card (student card), you gain access to the nations' activities by presenting your admission letter, which must be stamped by your nation.

If you want, you can get involved in your nation, and can then sometimes get priority for housing in the nation. You can work in any nation. More information about the various nations and their activities can be found on the respective nation's website. For the nation of Småland, special rules apply as they are outside the Academic Association and the cooperation between the various nations. If you want to be part of Smålands, it is therefore recommended to be a supporting member of another nation, in order to gain access to e.g. AF residences and the operations of the other nations.

GUILDS



Engineering Physics,
Engineering Mathematics & Engineering Nanoscience -Math-House



Electrical Engineering & Biomedical Engineering -E-House



Mechanical Engineering & Mechanical Engineering with Technical Design -M-House



Civil Engineering, Fire Protection Engineering, Risk Management & Surveying -V-House



Architecture & Industrial design -A-House & IKDC



Chemical Engineering & Biotechnology -Chemistrycenter



Computer Science and Engineering, Information and Communication Engineering -E-House



Doctoral student & PhD students -All around LTH



College engineer education & Engineer base year -Campus Helsingborg



Environmental Engineering -Chemistrycenter



Industrial Engineering and Management -M-House



The student union is divided into eleven guilds; independent associations that are closely linked to the union.

The guilds cover one or more educational programs and deal with questions that are specific to their own programs. They carry out largely the same kind of activity as the student union, but in most cases on a somewhat smaller scale and with a more specific target group.

The guilds are always listed in chronological order in relation to when they were founded.

KFS in the Study Centre

A shop near the students inside the LTH Studiecentrum. Here you will find, in addition to compendiums and course literature, profile clothes, hats, office supplies, USB sticks and more.

PAINT CAMPUS PURPLE

This map gives a small overview of the campus and where the different houses are located.

The colored dots show where the different guilds' monuments are located. The tradition is to paint the other guilds' monuments in their own guild's colour. We will therefore try to keep all monuments purple for as long as possible.

In addition to the monuments, there is also the "Telephone kiosk Kiosk" on the "island Island" in "lake Lake", which must also be purple, of course. Do you feel compelled?





PRESIDENT FREDRIC AHRLING

Hejsan!

First of all, I would like to congratulate you on your admission and wish you welcome to LTH. My name is Fredric Ahrling and I am the President of the student union at Lund's faculty of Technology (TLTH). I am also a student but have taken a break from studying to work fulltime on issues that concern us who study at LTH. Your time as a student can be an absolutely fantastic period in life, but it can also be filled with challenges. As a rock in the storm to lean on, there is the student union, to give a golden touch to those wonderful moments and to provide comfort and support when it is difficult. Among other things, the student union ensures that the courses you study are evaluated and constantly improved. Through our business fair ARKAD, you can find summer jobs or get an idea of what you can do once your studies are over. Finally, of course, we organize lots of social events and parties. There is always something fun going on at the student union! Your first meeting with the union will probably be through your guild. Depending on which program you study, you are assigned to one of our eleven guilds, which have extra control over things that concern you and your fellow students. Through the guild's intro, you get the chance to find fellow students and of course have incredible fun. Being a "nolla" is perhaps the best thing you can be here at LTH, so I really hope you enjoy this time! Finally, I and everyone else at the student union are really looking forward to meeting you, so please come and say hello. If you have questions, you can always get in touch and I promise: We will never let you down!

See you around,
Fredric Ahrling

NOLLEAMIRAL

FABIAN LUND



Hejsan and welcome to LTH!

Super fun that you have chosen to study here in Lund! My name is Fabian Lund and I am this year's Chief of Introduction or "Nolle Admiral". So it is me, together with my Øverstars, who have eagerly planned the student union's introduction event. We have invested a lot of time during the spring to be able to welcome you, the new nollor to LTH, in the very best way. We therefore look forward to meeting you! Since much of the intro is in the own guilds, my Øverstars and I want to invite you to the union's event where you will be able to meet other guilds a little more. With a fantastic intro ahead with loads of fun, there's something for everyone. The intro is an incredibly fun time made especially for you, so my appeal is to participate in as much as you can and want.

A BIG welcome to LTH from me, Admiral Fabian



HELLO! We are the Øverstar this year! We represent the student union and usually we go to the various guilds just like you (as you can see on our nice overalls). We have been working during the spring to welcome you with our fantastic events. During these events you will have the opportunity to see the other guilds a little bit more, and you will be able to challenge them in lots of fun competitions. Our events have been around for a long time and with great guild spirit and competitive spirit, the events are here for you to meet more friends. We are, to say the least, super excited to meet all of you nollor. Hopefully we can offer something that will suit you.



THE SABBATICALS

So wonderful that you have made it to Lund and LTH - a big congratulations from all of us at the student union at Lund's faculty of Technology. We are a group of full-time workers who normally also study at LTH. We at the union and our guilds work to ensure that your education continues to be one of the best in Sweden and is constantly improving. We ensure that there is contact with the business world and have events such as the businessfair ARKAD. We make sure that sports activities, singing competitions, balls and not least - Introduction are offered! In the coming weeks, the intro will hopefully guide you into university studies and Lund's student life. The intro can sometimes feel long and there is a lot to take in, but then don't hesitate to contact someone in your guild or us at the union and we will help with everything we can! The intro at LTH is fantastically spectacular and we here at the union are jealous of you who have a whole introduction ahead of you! If we can give one piece of advice, it is to really take the chance to experience new things, meet new people and explore student life. There is something for everyone! Again, welcome newbie engineer! If you have questions, hopefully we have answers at the student union, and we are here for you!

See you in the fall,
The Sabbaticals

AND NOW A COUPLE WORDS FROM OUR SPONSORS...

Hello, dear newly admitted architecture and design students!
Hope you feel excited to take part in everything the A-guild has to offer!
You may be wondering why in the world the F guild is here in A-guild's
introguide? And what is the F guild even?

The F guild is another guild that exists for those of us studying Engineering
Physics, Engineering Mathematics and Engineering Nanoscience. You'll
hopefully see some signs here and there in these coming weeks of the F
guild's influence, and - if nothing else - we're glad you know we exist.

The F guild's and A guild's relationship goes all the way back to 2021 when
some beef between the guild started. What facilitated the relationship
enormously was the addition of the charismatic duo President Ida and
Øverphøs Enigma. Together, this duo began diligently courting Överfös
Niamh and President Hjalmar, who began to consider a collaboration and
felt ready to open the metaphorical wallet to give leftover small change
(unofficially the handshake had taken place long before) to their fledgling
sister guild.

Now we stand here - like a proud older sibling - and happily look at all the
achievements of the A guild. But like a big sibling, we won't allow the A guild
get the credit for its fantastic intro all alone. When you go to dinners or other
events in the future, you should always have in the back of your mind that
the F guild was always there, as a helping hand.

Well meet,
The F Guild





www.asektionen.se



A-sektionen inom TLTH



A-sektionen inom TLTH



VI VET VILKA BÖCKER DU BEHÖVER



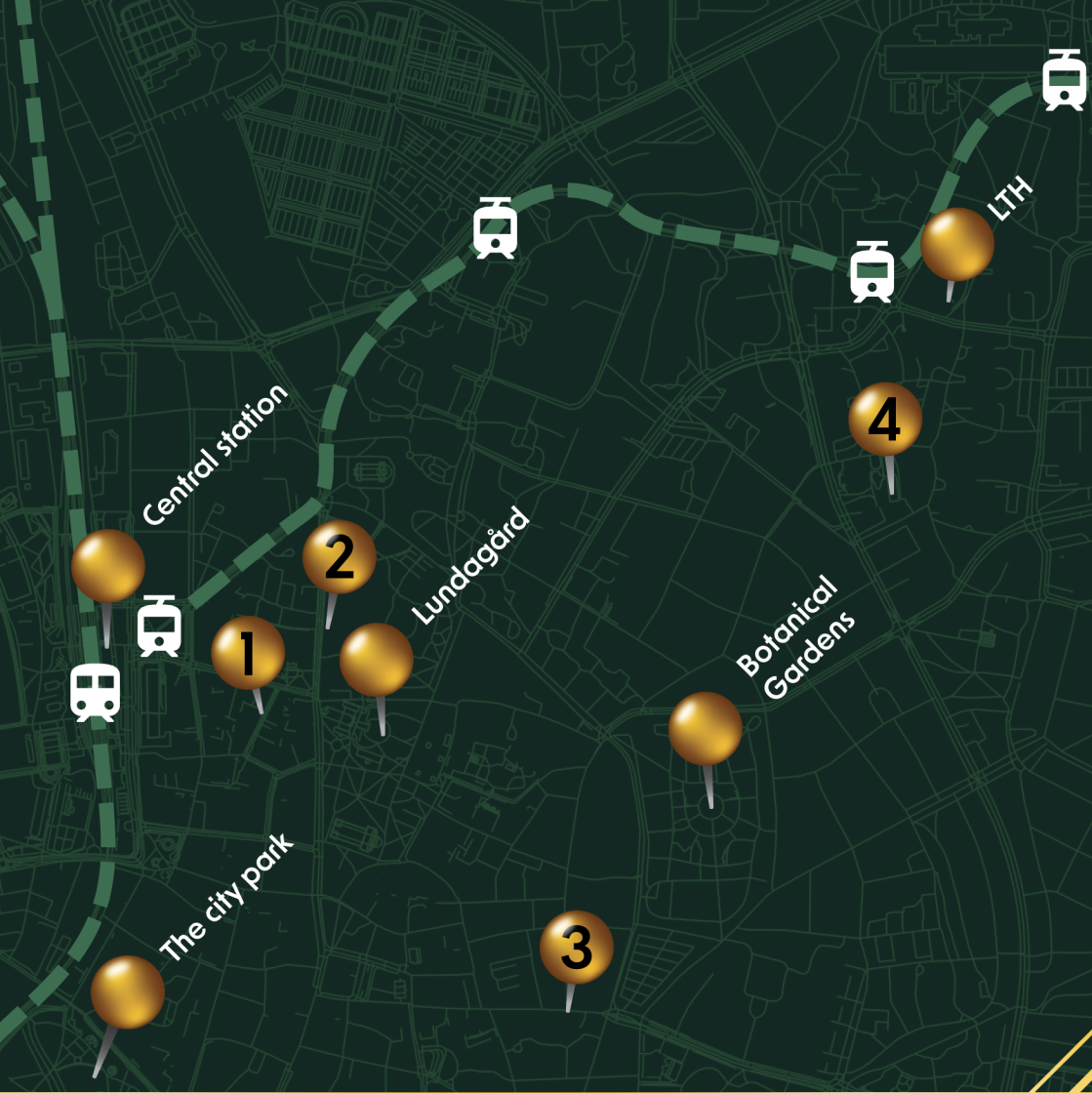
KFS AB ägs av Teknologkåren, så vi arbetar för att ha rätt böcker i rätt tid. Därför säljer vi begagnade så väl som nya böcker.

Välkommen till oss!

Studiecentrum
Hemsida: kfsab.se



Öppettider
Mån - Tors 09:00 - 17:30
Fre 09:00 - 15:30
Lunchstängt 11:25-11:55



1



Campus-
bokhandeln

2

Ljungbergs
Artist

3

Butterick's

4



TIPS AND TRICKS

Stores

-Don't forget that many stores offer a student discount with the Student Card or Mecenat.

KFS

-Here you can buy both new and used course literature. Selling books through us is just as easy.

Food

- Hilbert café in the Mathhouse has good and cheap lunch sandwiches.

-Bryggan café at IKDC!

-A-Phøs usually hangs out at "Gott och Nära".

Bike

The absolute best, most efficient and the most common way to get around Lund is by bicycle. It rarely takes more than fifteen minutes to get between two places in the city and the traffic is completely adapted to the many bicycles. Check "Blokett.se" or flyers at ICA for a nice bike and get a proper lock, preferably two, as many bikes in Lund are stolen - both new and used. Don't forget the bike light, it's illegal to drive without it!

The academic quarter

The academic quarter is a concept that exists all over Lund. The academic quarter (15 min) generally means that you start a quarter after the scheduled time, but only applies to full hours. So 13:00 means 13:15 but 16:15 does not mean 16:30. On weekdays after 18.00 and on weekends we speak of double quarter, i.e. 30 minutes. If you mean that something actually starts at the appointed time, you use the expression "prick" abbreviated (.) for academic quarter and the expression "prickprick" abbreviated (..) for double quarter.

The academic quarter is an old tradition that came about when many students could not afford a watch. When the church bell rang, they knew they had fifteen minutes to get to their lecture. In the evenings and weekends, double quarters applied so that you would have enough time to put on your coat or ball gown. A confusing tradition that will drive you a little crazy at times.

ACCOMMODATION

AF Bostäder

The largest housing association for students in Lund is AF Bostäder (Akademiska Föreningens Bostäder). At AFB there is everything from small corridor rooms to large apartments. To get housing at AFB, you must be a member of the Academic Association, AF. AF Bostäder has a novice lottery at the end of the summer that you should sign up for. Go to www.afb.se.

Housing companies

At these housing companies there is a long waiting time for apartments. But it may still be worth keeping an eye on their websites, www.lkf.lund.se och www.hsb.se.

Privately owned housing

"www.bopoolen.nu", "www.studentlya.nu" and "www.blocket.se" has online private ads. Here you can look at housing ads posted by others or search yourself.

Nations

The various nations also have a large selection of rooms and smaller apartments. For more information; call or check each nation's website.

Independent organizations

Michael-Hansen Kollegiet (046-13 84 57) is a foundation that awards scholarships and accommodation to talented and sometimes also to not-so-talented students. Studentska gården, (046-211 45 00) is a housing organization exclusively for women. Thomanders (046-211 78 80) accepts men only.

Urgent housing

Don't forget that there are nearby cities and towns where you can find accommodation. If your choosing between that and leaning against a park bench, it's more worth the commute.

VOCABULARY

A-House: The large brick house north of the V-house where the architects live.

A-blazer: Guildclothes. The A blazer is the A guild's equivalent to the other guilds' overalls.

A-Sexmästeriet: A lovely bunch of A students who fill your bellies during the dinners! You often recognize them by their wide smiles! Smile back. It pays off.

AF: Abbreviation for "Akademiska föreningen". Every Lund student is automatically a member of the association when the semester bill at the nation is paid (with the exception of Småland's nation). The association owns AF-borgen and AF housing (www.afb.se). They have committees for spex, student evenings, balls, carnival and much more!

AF-borgen: The above association's very pompous headquarters down in Lundagård. Balls, big parties and spex are held here all year round!

Alice: 1) A little girl who fell down a hole 2) Purple boat in "lake Lake" that is owned by A-Phøs 16.

Bytis: Student from another country. Likes to party.

Café Bryggan: Café Bryggan is located at IKDC and for approx. 80 SEK they serve you today's lunch with coffee.

CSN: If you keep them in a happy mood, you will get money, which you need. www.csn.se

Deadline: Something that occurs repeatedly during the semester when a project must be finished.

Delphi: 1) City in ancient Greece, famous for its oracle. 2) Student housing area in Lund, located near LTH.

Eftersläpp: The after-party that usually follows a sitting with loud music, a bar, a dance floor and a lot of fun!

Etikett: Something that every student should have during the dinners. May worsen during the evening. To avoid this see the songbook.

ET-slasque: Party after the exam period where you try to clear out unnecessary learned knowledge before the next study period.

Exjobbare: Really old students (5s, 6s, 7s, 8s... yes you get the idea) who are polishing their thesis. Are granted various advantages compared to younger students.

Fullskalelabbet: Multifunctional room originally intended for full-scale laboratories, located in the A building. Exhibitions, workshops and briefings take place here.

Gasque: Finer parties for engineers, e.g. Nollegasque. If you are invited to a party where formal dress is required, you should go to a ball, royal dinner or maybe even The Nobel party. This means that you must wear a tailcoat/ball gown or formal dress (folk dress).

Gasquesalen: A room in the union building that is used for larger dinners with other guilds, eftersläpp and events.

Genomgång: Also project reporting, criticism. Is a form of examination where your project is assessed by extremely experienced professors, teachers and ex-jobbers.

Gott och nära: The pizzeria closest to LTH, can be nice during a night shift.

Gyckel: A short performance that is usually performed by your or another guild's Phøs/Fös/pHøs/Stab. Also called spex.

Heltidare: Person who works full-time within the nation or the student union.

IKDC: Ingvar Kamprad Design Centrum. A house donated by Ingvar Kamprad and the industrial designers' "Base of operation".

Jesusfyllan: A hangover with so much bang that you don't resurrect for three days.

Kårhuset: The student unions (TLTH) building on the LTH area. Contains the unions' office and expedition, restaurant, auditorium, gasquesalen, floorball court, sauna and punch porch.

KFS: The student union's bookstore, which is close at hand in the Study Center. There is a small selection of materials that can be used during your time at school.

Lopftet: Party venue behind the chemistry center, where many parties and ET-slasque are held. The building is a former pig pen or... maybe still is?

LTH: Lund's faculty of Technology, which was founded in 1961. Makes up the engineer faculty at Lund University. This is where you study.

Lundagård: Beautiful park that includes both the University House and the AF-borgen and which on fine days is filled with A students and other Lundense residents.

Lundakarnevalen: Big folk festival in Lund every four years with carnival processions, concerts, spex and Lundagård filled to the brim. Next time in 2026.

Läsvecka: To distinguish us students from ordinary people, we use reading weeks instead of ordinary week numbers. Reading week 1 is the first week of school.

Mellanfest: Occurs between the sitting's dessert and the admission to the eftersläpp.

Monument: All guilds have their own monument. For A, it is the pencil on the grass between the A-House and IKDC. During the intro, it is tradition to paint the monuments of the other guilds in their guild color at night. The "telefonkiosken Telefonkiosk" booth on the island Island will also be painted.

Nattpass: To spend a cozy long evening with your friends in an atelier/studio with lack of oxygen, music and grind mindset.

Nolla: 1) Number that means nothing. 2) New student at LTH.

Nolleamiral: TLTH's own øverphøs. Takes command of the øverstar and takes care of interguild events.

Nollegeneral: A person who stands above the øverphøsen, the Nolle Admiral and the øverstar, and is appointed by the TLTH. The Nolle General has disappeared under mysterious circumstances this year.

Novisch: Newly admitted student at Lund University, also called Nolla.

Omtenta: Like an exam, but once more. The tenth time the same exam is written, festive clothes must be worn.

Phadder: Student from a higher year who helps you nollor through the first weeks of school and your new best friend.

Phaddergrupp: See Phadder, multiply by 10 and add fifteen Nollor.

Phøs: Nollan's inexhaustible source of information, fun and crazy antics during intro. Recognizable in their s(p)exy costumes.

Sexa: 1) Thanks you party for sexet after the sitting. 2) Meal eaten rudely late at prom.

Sexmästare: Committee chairman within the festivities committee who, together with their officials, cooks/serves all the good food for the sitting or holds bars and after parties.

Sittningar: A sitting is a lively dinner in the company of other students where you both eat, drink and sing. Dress code and culinary level varies. The songbook will tell you about common sense and etiquette.

Skalman: A guild's mascot.

Skånska: Wonderful dialect that you should learn to understand for practical reasons.

Slasque: Overall-dinners or slasque are parties where guild clothing/overalls apply as the dress code. For the A guild, the A jacket therefore applies.

Sjön Sjön: Sinkhole between the Math-House and the E-House, a remnant from the brickworks that was here before LTH was built. Contains something that was originally water. In the "lake Lake" is the "island Island" and on the island Island stands the "telephone kiosk Telephone kiosk".

Sparta: 1) City in ancient Greece where people lived simple lives without unnecessary luxury. 2) Concrete student ghetto in Lund where people live simple lives without unnecessary luxury.

Spex: Is a longer musical and comic performance performed on stage by spexic creatures. Called in the rest of Sweden theater.

Sångboksinsjungning: Your great chance to learn common sense and etiquette ahead of upcoming meetings. The occasional table manners may also need to be practiced. Good to know if you were ever to be awarded the Nobel Prize or an Oscar.

Telefonkiosken Telephonkiosken: Available for viewing on the island Island and should ideally be purple at the end of the intro.

Teknolog: You are like that, but a little nicer and a little better. Another name for a student at LTH.

Teknologmössan: All engineers must wear the technologist's cap after the intro has been completed. It is a normal student cap where one side is extended to a tongue where a black tassel hangs. The spogat is the colored ring that was attached to the tassel. For every new year you hang on to a new one.

Tenta: Form of examination where you have to show everything you remember on a piece of paper and try to hide what you don't remember.

TLTH: The student union at LTH. They are based in Kårhuset.

Truls och Trula: Male and female LTH engineers can always be called Truls or Trula. Never used in everyday speech.

Ångest: Observe Deadline and Tenta.

Ön Ön: An island in lake Lake. Is mostly uninhabited, except during the Regatta, when it is so overcrowded that it almost sinks. The telephone kiosk must of course be purple.

Øverste: TLTH's phøsgroup. Works for the Nolle Amiral.

Øverphøs: The Phøs' driving force, their terrifying leader and the Nollas' greatest source of inspiration.

SCHEDULE

	MONDAY	TUESDAY	WEDNESDAY	THURSDAY	FRIDAY	SATURDAY	SUNDAY
V.0	21 Aug Introductions Phadder evening	22 Aug Utskätten	23 Aug Board's Bar	24 Aug Olympiåden	25 Sep Lär dig sitta	26 Aug Phadderbrunch Stadsvandring En Ingen Aning Uredischot	27 Aug Rest
V.1	28 Aug Midsommar with InMA	29 Aug Lunchbeat Missionassignm. Missionbar	30 Aug Dragning INGvasion	31 Aug Lunchlecture Mission evening	1 Sep Mission evening (Flying & Waterco) Phadder evening	2 Sep Silfrukost with Gernu FLYING	3 Sep Patchpicnic Insigniapainting
V.2	4 Sep Arts & Crafts with JamnikKA Mission evening	5 Sep Waterloo BBQ evening	6 Sep En sitting på Lophi	7 Sep Lunchlecture Mission evening	8 Sep Nollefriday ØPH & Cheer	9 Sep Nolleaturday Leddistrace Snowdovrn Ballongstjapull FAKING	10 Sep Nollesunday Kegglan
V.3	11 Sep Coke competition with SFA & SPID	12 Sep Parrhybrinnboll Grop-rave with MUZAK	13 Sep Pepp evening	14 Sep Lunchlecture halloween Feast	15 Sep Phadder evening	16 Sep Dryckesmil with Akiu	17 Sep Rest
V.4	18 Sep Screenprint with InU	19 Sep Pepp på Lophi	20 Sep Rest	21 Sep AfterWork Tournament	22 Sep Rest	23 Sep Ordenskapitel GASQUE!	