

EN NOLLNING UR
KATAKOMBERNA



NOLLEGUIDE
2024

DO YOU FEEL UNSAFE?

The most important thing about the introduction is to create a safe and welcoming environment where you get the best possible chance to get to know student life and your future course participants. The A-guild has zero tolerance towards all forms of discrimination, harassment and offensive special treatment.

If you feel unsafe, unfairly or badly treated, there are many ways to get help and support. No problem or issue is too small to raise. You can:

- talk to a phadder
- talk with the peppet
- talk with the phøs: overphos@asektionen.se
- talk with JämlikA: JämlikA is a committee within the A guild that works with equal treatment in education and within the guild's operations. JämlikA is available to all students and you can turn to them if you have been treated badly or unfairly, or want to raise something else related to equal treatment, well-being or discrimination. The chairman of JämlikA is the guild's equality representative and has a duty of confidentiality. jamlika@asektionen.se or an anonymous form at www.asektionen.se/kontakt/
- talk to Student social worker (SA) : The student social worker has taken a study break and works full-time with students' equal treatment and well-being at the student union. SA functions as support for members who have been badly or unfairly treated during their studies and have a duty of confidentiality. Unlike jämlikA, SA does not have a direct connection to the A guild, but is available to all students at LTH. sa@tlth.se or an anonymous form at www.tlth.se/klaga
- Talk to the Chief of introduction: The Chief of introduction coordinates the introduction for all TLTH guilds and is the överphøset's contact person in the union. nolleamiral@tlth.se

You choose whether and how your case is handled

Police
112 for ongoing crime
otherwise 114 14

The Crime Victim Hotline
Tel. 116 006
Weekdays: 09-19
Weekends: 09-16

Kvinnojouren
stod@kvinnojouren-lund.se

CONTENT

CONGRATULATION AND WELCOME!	4
ARCHITECTURE & INDUSTRIAL DESIGN	5
INTRODUCTION 2024	6
WHO ARE WORKING WITH THE INTRODUCTION	7
PHØSET	11
THE PEPP	12
PHADDERGRROUPS	15
SEXET	16
CLOTHING & TRADITION	17
TLTH	24
LTH	24
LUND	25
THE GUILDS	26
SPONSORS	28
TIPS & TRICKS	33
DICTIONARY	35

CONGRATULATIONS & WELCOME!

You are one of the lucky few who managed to get into one of these dream programs that make up the A-guild! To celebrate this and to welcome you and your new fellow students to Lund's faculty of Engineering and Lund, you will be greeted by a fantastic introduction during your first weeks at the university.

As an A-student, you are part of Sweden's second oldest university, Lund University, which was founded in 1666. You are also a member of the largest faculty at Lund University, LTH.

The guilds at LTH are within the student union and are run on a voluntary basis by the students on the courses that the guild covers. They function slightly differently depending on which educations they comprise and have been shaped into the structure they have today over several decades.

The A-guild today consists of the architecture program and the industrial design program. Our guild was the fifth to be founded in 1965, that means we are 59 years old this year.

The main purpose of the guild is to make the members' study time as good as possible and act as study monitors. In addition, they exist to create a good community on and between the courses and also with the business world through various activities and events.

ARCHITECTURE & INDUSTRIAL DESIGN

As an architect and industrial designer, an exciting and broad, albeit demanding, industry awaits! The variety among the students is great, which makes the projects and the important collaborations extra interesting. The courses are characterized by both students and teachers being sincerely committed to their own and others' projects and visions.

The architecture program at LTH is both academic and artistic. The students are introduced to the profession with both theoretical and practical tasks. Model building and sketching are included, as well as courses in technology and digital tools. You usually work with larger projects, in parallel with longer and shorter courses.

The industrial design program is an artistic bachelor's program where students are introduced to and learn the process of product development, design and manufacturing. A lot of time is spent in the workshop, but also on this program theoretical courses are read in e.g. mechanics and materials science.

More detailed information about the programs and the various courses is available on Lund's faculty of Engineering's website:

www.arch.lth.se

INTRODUCTION

2024

We know how it feels to come alone to a new, strange city and start a new education. The introduction is for you to get to know new people as quickly and painlessly as possible and to be introduced to the fantastic years that you will spend here in Lund. There are many of us who will make sure that it will be a good introduction for you! We are the Phøs, the Pepp, the Phaddrar, the festivities committee and the student social worker.

The first five weeks that you will experience in Lund are thus largely planned by us and are called the introduction ("Nollning" in Swedish).

New students at LTH are called "Nollor", and not novices as in the rest of Lund. You are a Nolla right up until the Nollgasque, a large and formal party held at the end of the introduction. After a well-executed introduction and a fantastic sitting, you can rightfully call yourself a full-fledged "Etta"!

If you are worried and have heard about a introduction where the nollor are doused in copious amounts of alcohol and humiliated by older students, we can immediately put your mind at ease! The intro you will experience at LTH is a lovely few weeks of fun, mixed activities where we get to know each other together in pleasant and friendly ways. You will be well received by several Phaddrar who will do everything to make you feel at home in the study environment and in Lund as a city.

All intro activities are of course voluntary, with the exception of the daytime activities during reading week o (the first intro week, these are organized by the program management and study guidance). But the majority of nollor participate in everything precisely to find new friends, fellow students faster and more easily and to make themselves at home in their new study environment.

WHO WORKS WITH THE INTRODUCTION

THE PHØS

We who wrote this introguide and who put all our time and energy into welcoming you to Lund are the A-guild's Phøs. Phøset is a group of students from the guild who throughout the spring worked hard to make the 2024 intro an unforgettable experience!

THE PEPP

The pepp are Phøset's biggest aid during the intro. They are there for you if you have any questions or to get you started and keep the mood extra good during the intro!

THE PHADDERS

On the first day you will be assigned a phadder group. There are a total of eight. In each group there are eight or nine Phadders who take care of you during the intro and make sure that you get settled in Lund and at the A-guild. The Phadders are responsible for almost all

communication regarding intro activities, but are also there so that you can get answers to your questions about the studies, the Campus and life in Lund. Your phadder group has its own theme which is a sub-theme to the A guild's intro theme "En Nollning ur Katakomberna". In the phadder groups there will also be exchange students who, like you, are new to the school and Lund. Take the chance to start a conversation and make connections worldwide!

THE FESTIVITES COMITEE (SEXET)

Sexet has made it its life's mission to promote partying and joy in the A guild. It is sexet that organizes all the parties, dinners and bars that you will experience during your time at the A-guild. They also do a lot of extra job during the introduction, holding in extra bars and dinners!

STUDENT COUNSELOR

Petra Parmvi is a study and career counselor for both Architecture and the Industrial Design program. She takes care of the planning for the activities that happen during the day in the first week. Together with her colleagues, she has also supported Phøset in its planning of the intro. If you have questions, you can reach her most easily via email or phone:
petra.parmvi@lth.lu.se
046-222 70 79

AN INTRO FOR EVERYONE

In order for everyone to feel welcome during the intro, there are two golden rules that can be good to know:
-The introduction is completely voluntary foreveryone involved.
- Openness and respect must characterize the introduction.

EN NOLLNING UR
KATAK





IMBERNA

THE



ØVERPHØS ATERAX

The ruler of life and death and the head of the phøs is Aterax. He gives and takes life as if it were a commodity and can cut short or extend one's lifespan in an instant. The crown on his head is the artifact that is the source of all the evil and darkness that now overshadows the phøs and the world. From the will of darkness, Aterax leads the rest of the group, who loyally follow his highest wish. But there is hope, a way to restore balance to the world and return the phøs to its original form: the nolla!

PHØS APHERA

With the ability to control weather and wind, Aphera stands at the eye of the storm. Where she points, lightning strikes, and where she sweeps her hand, rain falls. Her powers have now been unleashed, and the black clouds close in tighter in the sky. We see catastrophic floods, scorching droughts, and brutal weather phenomena, all stemming from the tips of her fingers.



PHØS XAITENA

Xaitena is the name that echoes between time and space. She sees everything that has happened and everything that will happen. The fabric of spacetime is wrapped around her finger, and no event escapes her notice. She can reveal visions that strike fear into both body and soul. With the power to control the past, present, and future, Xaitena manipulates history for the selfish interests of the dark power.

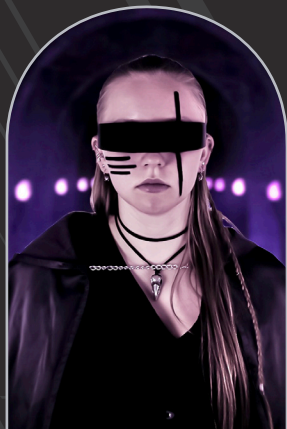


PHØS

PHØS ERIS

Eris, ruler of goodness and evil, can be as gentle as an angel or as cunning as Lucifer. She balances all good deeds, all humanity and mercy, with mankind's most deceitful and treacherous sides.

It is a task that requires dexterity and precision, so that the scales do not tip to the wrong side. The longer the curse grips the phøs, the deeper existence falls into wicked hopelessness.



PHØS NAJA

The power to control flora and fauna lies in Naja's hands. She is present in all life that surrounds us and is the main ruler of animals and all plants. She controls the wild, clinging like ivy to the smallest branch, and just like a cobra, she slithers through the thickets she creates. Under the grip of the curse, Naja has thrown the world's biotopes into imbalance and decay. As long as darkness reigns, the degeneration will only escalate.

PHØS AURORA

Aurora was once the protector of dusk and dawn. She rules over night and day, light and darkness. She governs the sun, the moon, and all the twinkling stars in the firmament. After the curse, night and darkness have gained the upper hand. The world lies shrouded in gloom, but as the nolla helps the phøs return to its former self, Aurora will once again make the sun shine on the A-guild.



A PEPP DOWN UNDER



G'day mAtes!!! We are a Pepp Down Under – the most excited and pumped-up group in the A-guild!

We're here to make sure the energy is always high and that the vibe always feels like a day at Bondi Beach. If you're in the mood for dancing, some shrimps on the barbie, or just want to chat, just reach out to one of us – we're always up for it <3

We're super excited to make this introduction the best ever and hope you are too!

Lots of love, your Pepp

OVERPEPPARE

ALICE



DANIEL



PEPPARE

SIMON



SARA



AXEL



THEO



NILS



ALICE



JONNA



PHADDE

INDIANA CLONES

Deep in the catacombs beneath the A-building, Indiana Jones was searching for archeological artefacts, when he stumbled upon a strange portal-like device. Careful yet curious, he decided to step through the portal. A bright and loud surge of energy filled the room, followed by complete silence. When he lit his torch again, he was surrounded by 26 identical copies of himself. It was the Indiana Clones!



SUBWAY SURFERZ

With LTH's strongest theme song, Subway Surfers are out all night long. No wall is safe from our graffiti, That's why we're chased through Lund City. With the coolest caps you've ever seen, Everything we do is super keen. No one can keep up with our speed, In beer pong, we're always in the lead. So watch out when August draws near, Lund's top mentor group will soon appear.



THE ROMEANTICS

In an A-guild full of rats, you're our red rose, With us by your side, the dopamine flows. Put on your heart shades, let The Romantics guide, To a rose-colored journey where joy won't hide. "Live, laugh, love" is our golden rule, Muscular, loving, and a bit cool. So be careful, don't let our charm take its toll, Before you know it, we'll win your soul.



LOST SAILORS

A legend speaks of a great river that leads into the Catacombs. In the year 1789, Captain Johnson and her crew sailed in, seeking the Lost Gold—a treasure rumored to be nothing but a myth. The deep, winding rivers were treacherous, and the ship faced countless perils... or so the story goes. Captain Johnson and her crew never found their way out of the catacombs. The legend whispers that they still sail through the darkness, eternally searching for their treasure, tormented by their unfulfilled longing for the gold.



RGROUPS



BRATZ

When the sun goes down and the music plays, Bratz come alive at LTH's bays. Their bond turns every night into a blast, Making you wonder what'll happen next or last. But if you ever find yourself unsure, Bratz will always find something fun to ensure. They may light up campus with their bling, But it's their hearts of gold that make them truly sing.

RAVERATS

When the cat's away, the rats will rave! Far down in the catacombs, EDM and squeaks roars throughout the crypt. Known for their neon-lit parties, they create a captivating scene where music pulses and colors flash in sync with their lively movements. They scurry back and forth in a mosh pit, never letting the beat down.



A-FORCE

A-Force is an elite squad of specially trained guinea pigs, fighting to save the world. Operating from the shadows, they often sneak through the tunnels beneath the A-building. Then, one day, the A-guild suddenly shuts down their division. But these tough, little heroes won't be stopped—they set out on a mission to save the world.



KATACLOWNS

One evening, a group of friends ventured to a mysterious, decaying circus outside Lund. Inside the dusty tent, they found a cellar filled with old clown costumes and props. With a mix of fear and excitement, they dressed in the dusty costumes and began to explore deeper into the cellar. They soon discovered that the place was filled with tunnels and secrets. After that thrilling night, they became known as the "Kataclowns." The true secrets of the cellar remain unspoken to this day. The Kataclowns are easily recognized by their stylish hats and sharp sense of humor.



SEXET



SONGBOOK

For dinners, it's fun to have a songbook, partly to keep up with the singing, but also to receive greetings during the evening when the book is passed around the table. Songbooks are available for purchase at the beginning of the introduction.



DO LIKE A-PHØS...

GET A BLAZER!

All guilds within the student union have their own guild clothing that represents the guild. Most guilds have overalls, but in the A guild we each have a black blazer that we print our guild's logo on!

So get a black blazer, if you haven't already. The quality matters less. On the jacket you will attach all the patches and other accessories you collect during your time as a student and afterwards it will become one of the most memorable items you own.

The A blazer should preferably be worn around the clock during the introduction if no other dress code is specified. Put your stamp on it and be proud of it! We also recommend that you get some comfortable trousers for the A blazer that you are not particularly fond of; it may happen that you get a little dirty at some events.

A tradition is that you exchange parts of your jacket for parts of the other guilds' overalls, or ouvve as they are often called, which are then sewn onto the jacket.

You look better at every party!



PATCHES!

During the course of the year, but perhaps especially during the intro, you will have the opportunity to collect patches for your acquired jacket. Some guildpatches will be available for purchase during select guild events and others will be obtained by participating in various events.

OUVVEN!

During the introduction period, an additional essential item will be sold: a non-mandatory but highly practical garment called an "ouvve." According to strict guild traditions, this must not be worn without a blazer. It is recommended that you speak with an experienced mentor on how to best cut and exchange your ouvve. (Scissors are not allowed at the events!)



MISSIONS

During the intro, you and your new coursemates will be assigned a mission to complete. These missions will be held between the guilds in several different categories. Participation is of course voluntary but highly recommended as you have a lot of fun together! In the categories where you are not competing yourself, you are welcome to come and cheer on the A-guild!

THE BALOONTAPULT

There is talk of a balloon weapon that can soak Phøs/Føs/pHøs/Stab during the Nollelördag, but be careful not to accidentally hit A-phøs! Here, your innovative skills are put to the test.



THE REGATTA

Build a ship to compete against the ships of the other guilds in the classic regatta battle that takes place every year in the clean waters of the lake Lake.



BOX CAR RALLY

Build a box car that will go around the fountain in Lundagård on Nollelördagen as quickly as possible.



CHEER

Create chants and maybe a dance and cheer on your classmates during their mission. On Nollefredagen, Cheer competes against the other guilds' cheerleading groups in a themed program.



ØVERPHØS OBSTACLE COURSE

Create an obstacle that becomes one of several in an obstacle course. Your team will then face the Øverphøs of all guilds in an epic match.



WATERLOO

Build a fort and keep it dry in a battlefield of water balloons while soaking others.



FLYING

Build a craft that will fly all the way from Helsingborg to Helsingør to Helsingborg to Helsingør to Helsingborg...





A-GUILD

"WE SHINE AS BRIGHT AS THE SUN"

A-SQUAD

The A guild has an A-Squad also called A-Laget or A-Team. This includes the guild's mascot, spirit animal and patron saint.



**PATRON SAINT
ROLF-KRISTINA**



**MASCOT
SKALMAN**



**SPIRIT ANIMAL
UNICORN**

THE BOARD

The Board holds overall responsibility for the guild's activities and serves as the guild's highest executive body, ensuring that decisions made at board and guild meetings are implemented. The group leading the guild's work is known as the Executive Committee, which includes our Chairperson, Vice Chairperson, Secretary, and Treasurer.

In matters of significant importance, decisions are made by the guild's members through the term meetings (HTM & VTM). The Board meets at least once a week. All guild members are welcome to attend these meetings, though they do not have voting rights. Please notify us in advance if you plan to attend. The Board is always interested in proposals, ideas, and opinions, and is keen to engage more creative and dedicated members.



ID 2

**PRESIDENT
AXEL PERSSON**



ID 3

**VICE PRESIDENT
WILMA GRAHN**



ARK 3

**TREASURER
EBBA PETERSSON**



ARK 3

**SECRETARY
AXEL KJELLBERG**

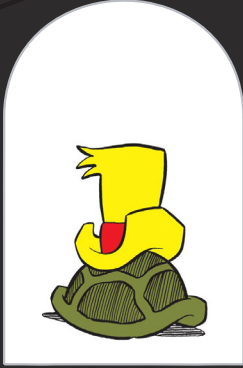


**ØVERPHØS
ATERAX**



ARK 2

**HEAD OF SEXET
HANNA ISAKSSON**



**HEAD OF INFU
VACANT**



**HEAD OF AKTU
MALTE BILLING**



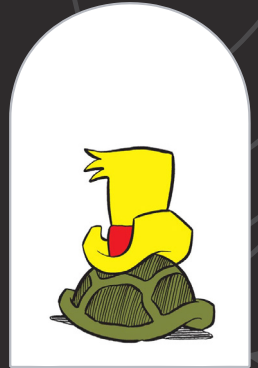
**HEAD OF CEREMU
IDA AHLSTRÖM**



**HEAD OF NÄRU
ELSA BERGQUIST**



**HEAD SRA
AXEL HEJNEBO**



**HEAD OF SRID
VACANT**



**EQUALITY REPRESENTATIVE
LEO KRONHOLM**



**HEAD OF INTA
OSKAR LANDGREN**



**HOUSE ELF
ERIC BOKLUND**

COMMITTEES

The committees have various focuses and are responsible for organizing different types of events. Each committee is comprised of one head of the committee and several members. There is always a need for volunteers, and it is a great way to meet people from your own and other programs. If you find a particular committee intriguing, feel free to reach out to the head of that committee. The guild is designed to serve its members, and there should be something for everyone.



ACTIVITIES COMMITTEE (AKTU)

Responsible for the guild's activities & events. You can e.g. participate in the musical/spex "Sångarstriden" or why not the Tandem Relay between Gothenburg & Lund, all thanks to AktU. Or maybe you have a good idea for an event - don't hesitate to get in touch!



CEREMONY COMMITTEE (CEREMU)

The Ceremony Committee is in charge of all the traditions, etiquette, dresscodes, songs and medal ceremonies that uphold the ethos of the A-Guild. If you're interested in purchasing a songbook or a patch, come to us!



INFORMATION COMMITTEE (INFU)

In charge of the guild's graphic design and communication. Keep your ear to the ground with the well-loved guild magazine A4, which is happy to welcome more writers. InfU is also responsible for all the stylish posters for events. Is this something you're keen on, or do you think maybe the A guild should get merch? Join InfU!



EQUAL OPPORTUNITIES COMMITTEE (JÄMLIKA)

Working for an equal guild through equal treatment and discrimination issues. You can turn to Jämlika's chairman with problems and questions regarding these issues. The committee holds lectures/seminars in the subject and provides support for the students in the A-guild.

BUSINESS COMMITTEE (NÄRU)

Working to establish important contacts between business and students at A so that you, as a student at an early stage of the education, will have the opportunity to expand the contact network and gain an insight into working life. NärU organizes, among other things, Archipelago, Alumni talks, lunchtime lectures and workshops, to name a few.



PHØSET

The Phøs is responsible for planning and implementing the A guild's introduction, which takes place during the first five weeks for you as a new student in the guild. They are the six mysterious figures who put their heart and soul into giving you the best possible welcome!



FESTIVITIES COMMITTEE (SEXET)

If there is a barnight or a sitting, it is most likely Sexmästeriet that will host the event. The sexet's main task is to keep the mood and the community up here at A, and for that you need people who have an interest in cooking, serving or bartending. Do you feel enticed? Contact sexet to join!



STUDEN COUNCIL IN ARCHITECTURE (SRA)

SRA is the students' voice towards the program management at the Architecture Education. The goal is for all students to feel as good as possible and for the education to be the best it can be. SRA works development work with teachers and school management and organizes information conferences to improve your time at school.



STUDENT COUNCIL IN INDUSTRIAL DESIGN (SRID)

SRID is the students' voice towards the program management at the Industrial Design Education. It is important that the educational quality of the program is kept high and the atmosphere in the drawing rooms is good. If something is missing or can be added to the training, SRID presents it to the program management. Join us and give your opinion!



INTERNATIONAL COMMITTEE (INTA)

The guild's international committee, which arranges events for international students such as dinners, baking, Christmas parties, etc. The committee always needs more committed students who want to make the exchange students' time at LTH unforgettable. The committee also informs its own students about how to go about going on exchange.



LTH

In the northern part of Lund, just a few minutes by bike from the city center, is LTH. There you will study together with approx. 7000 other students, so it is always crowded with people.

In the middle of LTH is the Kårhuset, where the welcome address for the fall semester is held on the morning of your first day. You will then be shown over to the A-house, the Architects' main hangout, and IKDC (Ingvar Kamprad Design Centre), where you who study Industrial Design will spend most of your education. The two houses are connected via a glass corridor and are therefore often seen as two parts of one and the same building.

THE STUDEN UNION

As a student at Lund's faculty of Engineering, the engineering faculty at Lund University, you can become a member of the student union, TLTH. It is Lund's largest student union and conducts study monitoring activities, business contact and leisure activities such as sports activities, cafes, dinners, balls and introduction. The union conducts a lot of activities centrally, i.e. for the whole of LTH, but the absolute largest part of the activities is conducted in the various guilds. TLTH is divided into eleven guilds, with the A guild being the fifth to be formed.

It is voluntary to become a member of the student union and the one-off fee is well worth the money. Go to www.tlth.se and click on to student and become a member.

The Mecenat card is what will become your union identification, your so-called union leg. It may take a few days for the card to arrive, but in the meantime you can use the website medcheck.tlth.se or the mecenat card's own app to prove your membership. You must be a member of the student union to participate in the introduction and all upcoming union events. However, you may participate in the daily activities that take place during week 0 (first intro week) even if you choose not to become a member, as they are organized by the program management and study/career guidance.



LUND A TOWN FOR STUDENTS

Lund is a city strongly marked by the university. A real student town. Of Lund's approximately 100,000 inhabitants, no less than 45,000 are students and it shows! In the city park, at outdoor cafes, biking on the way to a lecture, in the queues to the nations, yes, everywhere is teeming with enthusiastic and happy students. Want to know more about what's happening in the city? Go to www.studentlund.se!

NATIONS

An important ingredient in what makes Lund such a wonderful city to study in is the nations. Joining a nation is optional, but it's something you definitely don't want to miss! The nations are run by students from lots of different educations and they organize all sorts of activities alongside their studies. Some examples of activities are: restaurant operations, sports activities, lunches, cultural events and nightclubs.

There are 13 nations in Lund, all of which have slightly different orientations. Please read about them before deciding which one to join. Regardless of which nation you join, you are welcome to participate in most activities of the other nations, and it is always possible to switch if you discover something you previously missed. The nations were originally associations for students from the same home regions and are therefore named after landscapes, towns or regions. Today, however, you can join any nation you want regardless of where you come from.

When you have chosen your nation, you register as a Novice at their service desks. They usually have special opening hours for novices, you can see this on the nation's website.

A couple of weeks after you enroll at the nation and pay your semester bill, you will then receive a student card. This, together with valid identification, allows you to take advantage of the nations' various activities.

If you want, you can get involved in your nation, and can then sometimes get priority for housing in the nation. You can work in any nation. More information about the various nations and their activities can be found on the respective nation's website. For the nation of Småland, special rules apply as they are outside the Academic Association and the cooperation between the various nations. If you want to be part of Smålands, it is therefore recommended to be a supporting member of another nation, in order to gain access to e.g. AF residences and the operations of the other nations.

SEKTIONERNA



F-GUILD

Physics-, mathematics- & nanoscience Engineering
Math House



E-GUILD

Electrical- & Biomedical Engineering
E-House



M-GUILD

"Normal" Mechanical engineering and with Technincal Design
M-House



V-GUILD

Civil Engineering, Fire Protection Engineering & Surveying
V-House



A-GUILD

Architecture & Industrial Design
A-House



K-GUILD

Chemistry- & bio engineering
Chemistrycenter "KC"



D-GUILD

Computer science & information-communication engineering
E-House



DOKT-GUILD

Doctoral & PhD students
All around LTH



ING-GUILD

College engineer & Engineer base year
Campus Helsingborg



W-GUILD

Environmental- & risk management + surveying Engineering
Chemistrycenter "KC"



I-GUILD

Industrial Engineering
M-House

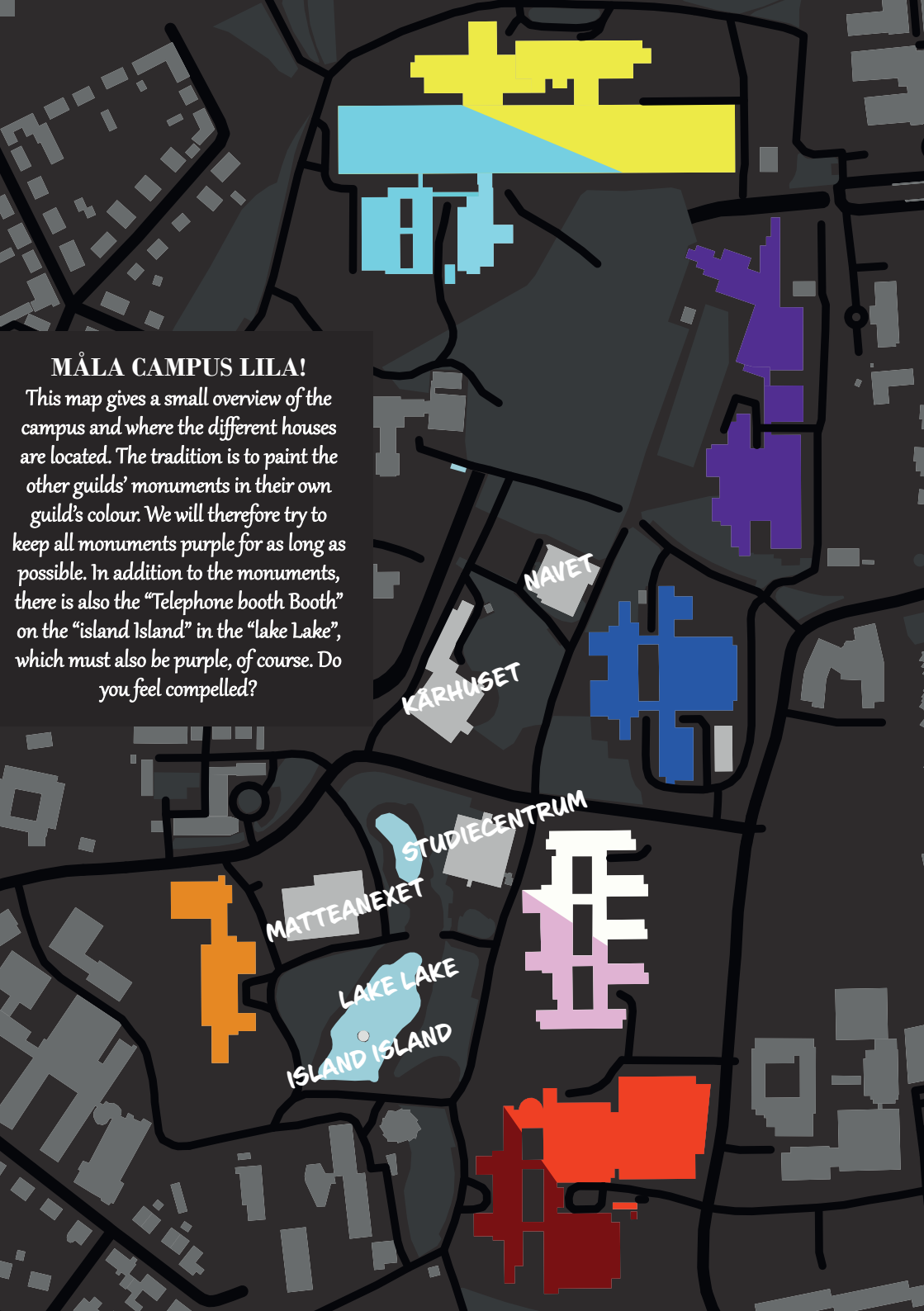
The student union is divided into eleven guilds; independent associations that are closely linked to the union.

The guilds cover one or more educational programs and deal with questions that are specific to their own programs. They carry out largely the same kind of activity as the student union, but in most cases on a somewhat smaller scale and with a more specific target group. The guilds are always listed in chronological order in relation to when they were founded.

FEMVAKDINGWI

MÅLA CAMPUS LILA!

This map gives a small overview of the campus and where the different houses are located. The tradition is to paint the other guilds' monuments in their own guild's colour. We will therefore try to keep all monuments purple for as long as possible. In addition to the monuments, there is also the "Telephone booth Booth" on the "island Island" in the "lake Lake", which must also be purple, of course. Do you feel compelled?



OUR DEAR SPONSORS



VI VET VILKA BÖCKER DU BEHÖVER



KFS AB ägs av Teknologkåren, så vi arbetar för att ha rätt böcker i rätt tid. Därför säljer vi begagnade så väl som nya böcker.



Studiecentrum
Hemsida: kfsab.se



Välkommen till oss!

Öppettider
Mån - Tors 09:00 - 17:30
Fre 09:00 - 15:30
Lunchstängt 11:25-11:55



Vi säljer handplockade garner i naturmaterial med kvalitet och hållbarhet i fokus, håller stickkurser och på onsdagkvällar stickcafé. Välkommen till Tant Hulda på St. Gråbrödersgatan 13 i Lund. www.tanthulda.se Följ oss på @tanthuldailund

CHANGE MANAGEMENT





TANT HULDA

Yarn shop



PIZZERIA GOTT & NÄRA

pizzeria on LTH campus



KFS BOKHANDEL

Bookstore at LTH where you can purchase your student literature



LUNDAGÅRD

Here are the University Building and the AF Building



BOTANISKA TRÄDGÅRDEN

Beautiful park near LTH, a pleasant spot for a picnic and sketching

PRESIDENT



My name is Ebba Ljunggren, and I am the President of the Student Union at Lund University of Technology (TLTH). I usually study at LTH as well, but I have taken a sabbatical year to work full-time on issues that affect us students.

As autumn approaches, you are about to enter an incredibly exciting time in your life. The student experience comes with endless opportunities and can be a truly wonderful period. To ensure that your time as a student is indeed fantastic and to support you during challenging moments, the Student Union is here for you.

Together with our eleven guilds, the Student Union works to ensure that the quality of your education is as high as possible. We also maintain contact with the job market to help you gain insight into potential career paths after your studies and to provide opportunities to connect with future employers, notably through the career fair ARKAD. Of course, we also organize numerous social events and celebrations where you can both participate and get involved, especially during the introduction period!

The introduction period is one of the most unconventional experiences you can have, and I encourage you to dive into it, try something new, and challenge yourself. As cliché as it may sound, my life has been turned upside down since I became part of the LTH community, and I am incredibly grateful for all the opportunities that student involvement has brought me. You are entering a time of both strange and transformative experiences, and it is an honor for me to welcome you to it. Lund is a fantastic place, and I hope you, like me, will feel at home at LTH.

Feel free to come up and say hello if you see me or anyone else from the Student Union on campus, and don't hesitate to reach out if you have any questions about our activities, your studies, or student life in general. See you this autumn!

Ebba Ljunggren
President 24/25
ko@tlth.se

THE NOLLEAMIRAL & THE ØVERSTAR



Welcome to LTH!

My name is Casper Johansson, and I am this year's Nolleamiral. Along with my Øverstar, I have planned the central introduction events at the Student Union. We have invested a lot of time this spring to prepare the best introduction experience possible for you, and we hope you will enjoy it immensely! Enjoy the introduction period; it will pass in the blink of an eye, and make sure to have as much fun as you can!

See you during the introduction!
/Casper, Nolleamiral 24



THE SABBATICALS

How incredibly exciting that you've found your way to Lund and LTH! A big congratulations from all of us at the Student Union at Lund University Faculty of Engineering (LTH)! We are the Student Union's sabbaticals, 10 students who have taken a year off from our studies to work full-time on everything related to your time as a student at LTH. Each of us has different primary responsibilities, covering everything from student politics and academic advocacy to finance, leisure activities, and rental services. We're here to make your time here as educational and enjoyable as possible!

Life as a sabbatical is very varied. In addition to working closely with LTH, we also have regular meetings with other engineering student unions in Sweden and get to represent the Student Union at numerous events within Lund's student life. At some of the freshman events, you might even see us running around in our grey overalls. On weekdays, you can find all of us at the sabbatical office in the Student Union building. You'll also find Camilla there, the Student Union's administrator, who is happy to help you with everything from bookings to lost items. Feel free to come by and say hi!

Once again, congratulations and a warm welcome to LTH and the Student Union.



GREETINGS FROM SA

Hello! My name is Filip Lennhager, and I am the Head of Student Welfare at the Student Union of Lund University Faculty of Engineering (LTH). I study Electrical Engineering, but I am currently on a break from my studies to work full-time for a year on educational policy issues and improving the union's activities from a student welfare perspective. I look forward to meeting you at the start of the semester, and I am always available if you want to talk or have any questions. Don't hesitate to use the complaint form if there is anything you feel needs to be addressed, or contact me directly. You can, of course, also remain anonymous in the form. My door is always open to ensure that you have a safe and rewarding experience during your studies. See you this fall, and welcome to an exciting and eventful time here at Lund University Faculty of Engineering!

Filip Lennhager, Student Social Worker 24/25
sa@tlth.se
Klaga — the student union at LTH (tlth.se)

TIPS & TRICKS

The absolute best, most efficient, and most common way to get around in Lund is by bike. It rarely takes more than fifteen minutes to travel between two places in the city, and the traffic is completely adapted to the many bicycles. Check Blocket or notices at ICA for a decent bike and make sure to get a sturdy lock, preferably two, as many bikes in Lund get stolen—both new and used ones. Don't forget the bike light, as it's illegal to ride without one!

Academic Quarter

The academic quarter is a concept found all over Lund. The academic quarter (15 minutes) generally means that events start a quarter of an hour after the scheduled time, but this only applies on the hour. So, 13 actually means 13:15, but 13:00 means sharp, and 16:15 doesn't mean 16:30. On weekdays after 6:00 PM and on weekends, there's a "double quarter," meaning 30 minutes. If something actually starts on time, the term "sharp" is used, abbreviated (.) for the academic quarter, and "double sharp" is abbreviated (..) for the double quarter.

The academic quarter is an old tradition that arose because many students couldn't afford a clock. When the church bell rang, they knew they had fifteen minutes to get to their lecture. In the evening and on weekends, the double quarter applied to allow enough time to put on formal attire. A confusing tradition.

Shops

Don't forget that many stores offer student discounts with the Studentkortet or Mecenat card.

KFS

Here you can buy both new and used course literature. It's also just as easy to sell your books through us.

Food

Hilbert Café in the Mattehuset building offers good and affordable sandwiches for lunch. Bryggan Café at IKDC! A-Phøs often hangs out at Gott och Nära.

Other

If you become a foreman at a nation, you get free entry to nation clubs. If you're active within TLTH, you can earn merit points, among other benefits! Get a bike or possibly rollerblades—it's not fun always arriving last. Apply for housing allowance and don't forget to get home insurance.

HOUSING

AF Bostäder

The largest housing association for students in Lund is AF Bostäder (Akademiska Föreningens Bostäder). AFB offers everything from small corridor rooms to large apartments. To get housing with AFB, you must be a member of the Academic Society, AF. AF Bostäder has a lottery for new students at the end of the summer, which you should sign up for. Visit www.afb.se today.

Housing Companies

With housing companies, the wait time for apartments is long. However, it may still be worth keeping an eye on their websites, www.lkf.lund.se and www.hsb.se. Privately owned housing can be found at "www.bopoolen.nu," "www.studenttya.nu," and "www.blocket.se," which host online private listings. Here, you can browse housing ads posted by others or search for something yourself.

Nations

The various nations also offer a wide range of rooms and small apartments. For more information, call or check each nation's website.

Independent Organizations

Michael-Hansen Kollegiet (046-13 84 57) is a foundation that awards scholarships and housing to accomplished students, and sometimes to those who are not so accomplished. Studentske gården (046-211 45 00) is a housing organization exclusively for women. Thomanders (046-211 78 80) only accepts men.

Emergency Housing

Don't forget that there are nearby towns and areas where you can find accommodation. If it comes down to a park bench, it's better to commute.

ORDLISTA

A-huset: The large brick building north of the V-building where the architecture students are based.

A-kavajen: The guild's attire. The A-kavaj is the A-guild's equivalent of the overalls worn by other guilds.

A-Sexmästeriet: A wonderful group of A-students who satisfy your hunger during sittings! They are often recognized by their broad smiles—smile back, it pays off.

AF: Short for Akademiska Föreningen (the Academic Society). Every Lund student automatically becomes a member of the society when the semester fee for their nation is paid (except for Smålands nation). The society owns AF-borgen and AF-bostäder (www.afb.se). They have committees for spex, student evenings, balls, carnivals, and much more!

AF-borgen: The grand headquarters of the aforementioned society located in Lundagård. Balls, large parties, and spex are held here year-round!

Alice: 1) A little girl who fell down a hole. 2) A purple rowing boat in the lake Lake, owned by A-Phos 16.

Café Bryggan: Café Bryggan is located at IKDC and serves you lunch, including coffee and a refill, for about 80 SEK.

CSN: If you keep them in a good mood, you get money, which you need. www.csn.se

Deadline: Something that occurs repeatedly during the semester when a project must be completed.

Delphi: 1) A city in ancient Greece, known for its oracle. 2) A student housing area in Lund, located near LTH.

Eftersläpp: The afterparty that usually follows a sitting with loud music, a bar, a dance floor, and a great vibe!

Etiquette: Something every student should have during sittings. It can deteriorate as the evening progresses. To avoid this, refer to the songbook.

ET-slasque: A party after exam periods where you try to clear out unnecessary learned knowledge before the next study period.

Exjobbare: Really old students (fifth, sixth, seventh, eighth-year... you get it) who are working on their thesis. They are granted certain privileges compared to younger students.

Fullskalelabbet: A multifunctional space originally intended for full-scale experiments, located in A-huset. Exhibitions, workshops, and reviews are held here.

Gasque: Fancier parties for engineering students, such as Nollegasque. If you are invited to a party where formal attire is required, you are going to a ball, royal dinner, or perhaps even the Nobel banquet. This means you must wear a tuxedo/gown or traditional dress (folk costume).

Gasquesalen: A hall in the student union building used for larger sittings with other guilds, afterparties, and events.

Review: Also project presentation, critique. It is an examination form where your project is evaluated by highly experienced professors, teachers, and thesis students who love the sound of their own voices.

Gott och Nära: The pizzeria closest to LTH, which can be nice during a night shift.

Gyckel: A short performance usually presented by your or another guild's Phøs/Fös/pHøs/Stab. Also known as spex.

Heltidare: A person who works full-time within the nation or the student union.

IKDC: Ingvar Kamprad Design Centre. A building donated by Ingvar Kamprad and the base of operations for industrial design students.

Intis: A student from another country. Likes to party.

Jesufyllan: A hangover so intense that you won't resurrect for three days.

Kårhuset: The house of the student union (TLTH) at the LTH campus. It contains the student union office and administration, restaurant, auditorium, Gasquesalen, indoor bandy court, sauna, and punch veranda.

KFS: The student union's bookstore, conveniently located in the Study Centre. They have a small selection of materials that may be useful during your time at school.

Lophtet: A party venue behind the chemistry center, where many parties and ET-slasque are held. The building is a former pigsty, or... perhaps it still is?

LTH: Lund University Faculty of Engineering, founded in 1961. It constitutes the technical faculty of Lund University. This is where you study.

Lundagård: A lovely park that includes the University building and AF-borgen and on nice days is filled with A-students and other Lund residents.

Lundakarnevalen: A large folk festival in Lund held every four years with carnival parades, concerts, spex, and a jam-packed Lundagård. Next time in 2026.

Study Week: To distinguish ourselves from ordinary people, we use study weeks instead of regular week numbers. Study Week 1 is the first week of school.

Mellarfest: Takes place between the dessert at the sitting and the opening of the afterparty.

Monument: Each guild has its own monument. For A, it's the pen on the grass between A-huset and 1KDC. During the nolling, it is tradition to paint the other guilds' monuments in your guild's color during the night. The phone booth on the island Island should also be painted.

Night Shift: Spending a cozy long evening with your friends in a studio with oxygen deficiency, music, and a grind set.

Nolla: 1) A number that means nothing. 2) A newly admitted student at a technical university.

Nolleamiral: TLTH's own Øverphøs. Takes command of the øverstar and manages inter-guild events.

Nollegeneral: A person who ranks above the Øverphøs, nolleamiral, and øverstar and is appointed by TLTH. The Nollegeneral has disappeared under mysterious circumstances this year.

Novisch: A newly admitted student at Lund University, also called a Nolla.

Omtenta: Like an exam, but one more time. On the tenth time the same exam is taken, formal attire must be worn.

Phadder: A student from a higher year who helps you Nollor through the first weeks of school and becomes your new best friend.

Phadder Group: See Phadder, multiply by 8 and add fifteen Nollor.

Phøs: The Nolla's inexhaustible source of information, fun, and crazy antics during the nollning. Recognizable by their (s)poxy costumes.

Sexa: 1) A thank-you party for the sexmästeriet after the party. 2) A meal eaten at an ungodly late (early) hour at a ball.

Sexmästare: The committee chair within the Sexmästeriet who, along with their volunteers, prepares/serves all the delicious food at sittings or manages bars and afterparties.

Sittningar: A sitting is a lively dinner in the company of other students where you eat, drink, and sing. The dress code and culinary level vary. Please see etiquette in the song book.

Skalman: The A-guild's mascot and a very fitting skalgubbe!

Skånska: A wonderful dialect that you should learn to understand for practical reasons.

Slasque: Overall sittings or slasquer are parties where the guild attire/overall is the dress code. For the A-guild, this means the A-Blazer.

Sjön Sjön: A depression between the math building and E-huset, a remnant of the brick works that existed here before LTH was built. It contains something that was originally water. In Sjön Sjön is the island Island or øn Øn, and on the island Island stands the phone booth Phonebooth or kiosken Kiosken.

Sparta: 1) A city in ancient Greece where people lived simply without unnecessary luxury. 2) A student ghetto of concrete in Lund where people live simply without unnecessary luxury.

Spex: 1) A longer musical and comedic performance performed on stage by spex-loving creatures. Called theater in the rest of Sweden. 2) See Gyckel.

Songbook Singing: Your big chance to learn etiquette for upcoming sittings. A few table songs may also need to be practiced. Good to know in case you ever win the Nobel Prize or an Oscar.

Telephonkiosken: On display on the island Island and should ideally be purple by the end of the nollning. It is commonly referred to as kiosken Kiosken.

Teknolog: That's you, just a little finer and a little better. Another name for a student at LTH.

Teknologmössan: All engineering students can wear the teknologmössan after completing the nollning. It is a standard student cap where one side is extended into a flap with a black tassel hanging from it. The spegat is the colored ring attached to the tassel. Each new year, you add a new one.

Tenta: An examination form where you have to show everything you remember on paper and try to hide what you don't remember.

TLTH: The student union at LTH. The union for engineering students, based in the student union house.

Truls and Trula: Male and female LTH engineering students can always be referred to as Truls or Trula. Never used in everyday conversation.

Ångest: See Deadline and Tenta.

Ön Ön: The island in the lake Sjön. It is usually uninhabited, except during Regattan, when it becomes so overcrowded that it nearly sinks. The Telephonkiosken should, of course, be purple.

Øverste: TLTH's Phøs group. Works under the Nolleamiral.

Øverphøs: The driving force of the Phøs, their fearsome leader, and the Nollors' greatest source of inspiration.

SCHEDULE

	MONDAY	TUESDAY	WEDNESDAY	THURSDAY	FRIDAY	SATURDAY	SUNDAY
V. 0	26/8 Introductions Phadder evening	27/8 Utstøtten	28/8 BoAr'd's bAr	29/8 Olympiaden	30/8 Lær dig siffA	31/8 Brunch Stadsran DringEn INGEn fråGA LHEDIseshot	1/9 Pynta sårbok CeramU Tårbaakarævling NærU & SRA
V. 1	2/9 Rest	3/9 Missionassigim. Missionlekkeff fl. peppet	4/9 Lunchlecture Draggring INGvasion	5/9 Mission evening	6/9 Mission evening (FlyNG & Waterloo) Phadder evening	7/9 FlyNG	8/9 Patch picnic ØlAvnll
V. II	9/9 Screenprint & Crafts InglU & jærnleka Mission evening	10/9 WaTerloo Pub Crawl KANNNAN	11/9 Lunchlecture Slasque at Lopht	12/9 Mission evening	13/9 Nollefriday Guild-Date	14/9 Nollesaturday A FALKING Pårs hurt	15/9 Nollesunday
V. III	16/9 Partybrånneboll Groperparty	17/9 AW-Måsterskæpen	16/9 Lunchlecture Pepp Evening	17/9 En FArting siftring	18/9 Rest	19/9 Orderskæptitel GASQUE	